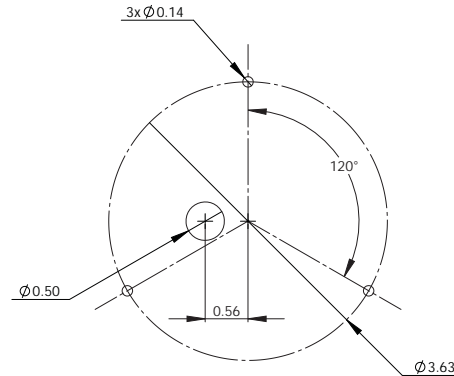
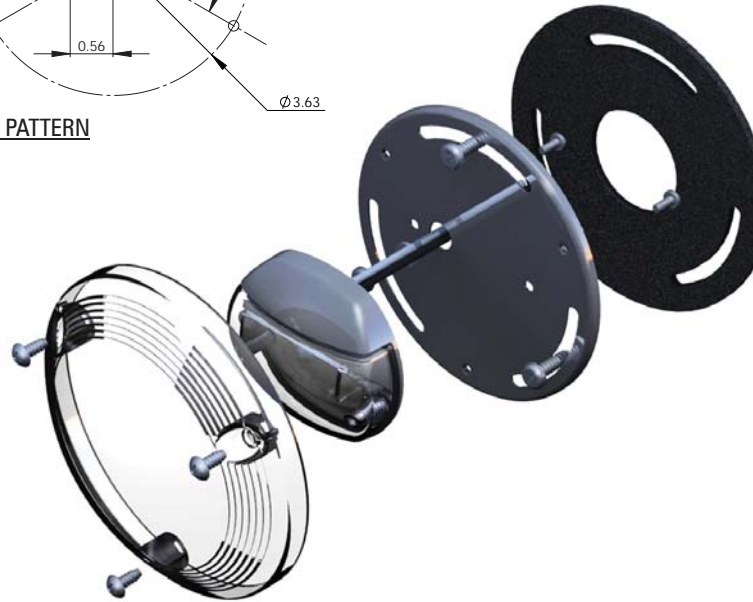


LED Step Well Light

#ECVSWLTST



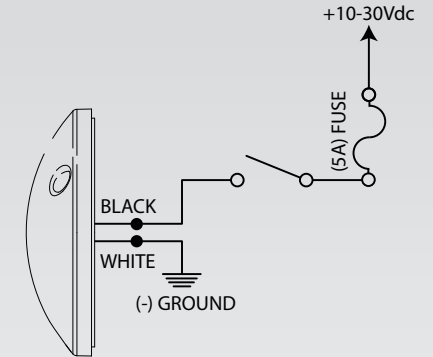
DRILL PATTERN



TECHNICAL SPECIFICATIONS	
Overall Dimensions:	Ø4.50" x 1.19"D
Input Voltage Range:	10-30Vdc
Current Draw:	0.3 Amps @ 12.8 Vdc, 3.5 Amps @ 25.6 Vdc
Wattage:	3.5 Watts
Reverse Polarity:	Protected
Load Dump:	Protected
Operating Temperature:	-40° to +65° C

ELECTRICAL CONNECTIONS:

See diagram below for required electrical connections. Connect the BLACK wire to +10-30 Vdc through a customer supplied 5A fuse and switch (optional). Connect the WHITE wire to a reliable ground.



INSTALLATION:

- 1) Refer to drill pattern or use metal mounting flange as a template for drilling holes for screws. These holes should align with slots in the flange.
- 2) Drill Ø1/2" hole for the wires. This hole must be free of burrs to prevent damage to wires.
- 3) Assemble light as shown and make electrical connections with gasket in place.
- 4) Screw unit in place. DO NOT OVERTIGHTEN SCREWS.

WARNING

This product contains high intensity LED devices. To prevent eye damage, DO NOT stare into the light beam at close range.

**SoundOff
Signal**

To review our Limited Warranty Statement & Return Policy for this or any SoundOff Signal product please visit our website at www.soundoffsignal.com and select the "Warranty & Returns" link along the left column of our home page. If you have questions regarding this product please contact Technical Services, Monday - Friday, 8 am to 6 pm at 1.800.338.7337, press #4 to skip the automated message. Questions or comments that do not require immediate attention may be emailed to techsupport@soundoffsignal.com.

1.800.338.7337. / www.soundoffsignal.com / Thank you for trusting us with your safety!