

# Interior DOME LIGHTS

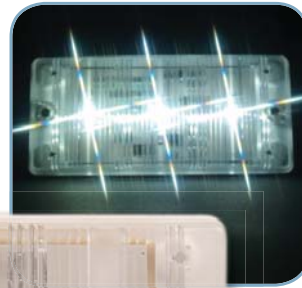
- 7" x 3.25" #ECVDMLTST2
- 6" x 3" #ECVDMLTST4
- 5" Oval #ECVMLDP2W



ECVDMLTST4



ECVDMLTST2



## LED STRIP LIGHT

- 12 volt #ETULT12W
- 10-30 volt #ETULT12W-24



### #ECVDMLTST2 - Universal Dome Light, Gen3 LED

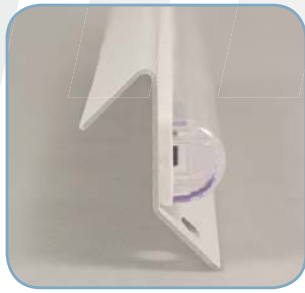
- Exclusive lens design disperses the maximum amount of light
- Easy on the electrical system - draws less than 0.65 amps
- Great for interior light for overhead lighting on passenger buses
- Durable polycarbonate lens & base is a simple surface mount
- Includes 2-wire lead w/ a 5" length & mounting screws for installation

### #ECVDMLTST4 - Universal Dome Light, Gen2 LED

- Smaller size with a lower price is budget friendly
- Easy on the electrical system - draws less than 0.3 amps
- Easy surface mount with a simple 2-wire electrical connection required
- Great interior light for overhead lighting on passenger buses
- Includes 2-wire lead w/ a 5" length & mounting screws for installation

### #ETULT12W & #ETULT12W-24 - LED Strip Lights

- Simple two wire electrical connection is easy to install
- Easy on the electrical system - draws just 0.4 amps
- Light has a white steel base with a scratch resistant polycarbonate lens
- Specially engineered Fresnel lens to boost light output and brightness
- Made with Gen3 LEDs for a long-lasting light with no bulbs to change
- Includes 2-wire lead w/ a 18" length



## LED 90° CORNER MOUNT STRIP LIGHT, 10 - 16 VDC

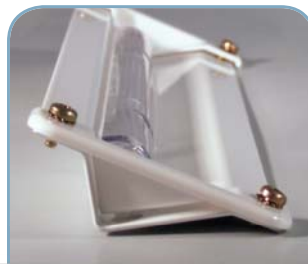
10" Length #ECVCSLLED10  
 21" Length #ECVCSLLED21  
 32" Length #ECVCSLLED32  
 43" Length #ECVCSLLED43

## LED 90° CORNER MOUNT STRIP LIGHT, 10-30 VDC

10" Length #ECVCSLLED10-30  
 21" Length #ECVCSLLED21-30  
 32" Length #ECVCSLLED32-30  
 43" Length #ECVCSLLED43-30

## LED FLUSH MOUNT STRIP LIGHT, 12 VOLT

12" Length #ECVCLLED12  
 24" Length #ECVCLLED24  
 36" Length #ECVCLLED36  
 42" Length #ECVCLLED42



### #ECVCSLLED(xx) - LED 90° Corner Mount Strip Light

- Streamlined, low amp draw LED lighting
- Easy on the electrical system - draws just 0.4 amps per 12" length
- Housing design allows for clean wire management behind the light
- Easy installation - make a simple 2-wire electrical connection
- Glossy white powder coated Aluminum housing with a polycarbonate lens
- 10- 30 volt models available
- Includes 2-wire lead w/ a 18" length

### #ECVCLLED(xx) - LED Flush Mount Strip Light

- Recessed, flush mount brightly illuminates dark spaces
- Easy on the electrical system - draws just 0.4 amps per 12" length
- Specially engineered lens optic directs light away from viewer's eye while illuminating interior spaces
- Field serviceable - easy access to individual modules
- Glossy white powder coated Aluminum housing with a polycarbonate lens
- Includes 2-wire lead w/ a 18" length & end/trim caps