

## Directional Arrow Switch (DAS)

### #ETSWDAS01

- Features 7 programmable Warning Modes with a fully illuminated display to show pattern activated & input selected
- Control multiple directional arrow products with 6-low current (0.25 amps) + 10-30 Vdc outputs
- Durable ABS plastic housing with an adjustable steel bracket
- Built-in Smart Sensor detects inputs from another switching source so it may be used with other manufacturers Directional Arrow products
- Includes Harness with 12" (31 cm) wire length
- For use with LED lights ONLY
- Compatible with APEX™, Pinnacle™ (EPL9000), ETL5000™ full sized LED lightbars, Pinnacle™ (EPL8000) LED interior bars & UltraLITE™ LED directional/warning bars

6.5" (17 cm) W x 3.5" (89 mm) H x 1.2" (30 mm) D



## 900 Series - 9 Function Switch

### #ETSP9F

- 9 functions: 3-position slide switch with 6 mini rocker switches
- Slide switch features 20 amps/output with LED indicator ON lights
- 4-20 amp fused switch outputs
- Made with a durable vinyl coated steel housing with backlit labels
- Interchangeable switch labels for switch identification: Rotating, Flashing, Rear Flashing, Front Flashing, Aux. 1, Aux. 2, Light Bar, Take Down, Left Alley, Right Alley, Deck Lts., Dash Lts., Grille Lts., & Gun Lock
- Includes Switch box with Universal Bracket, mounting hardware, switch labels & 18" pigtail w/ insulated quick connects for termination

6.2" (16 cm) W x 2.2" (56 mm) H x 5.2" (13 cm) D



## 600 Series - 6 Function Switch

### #ETSP6F

- 6 mini rocker switches with red LED indicator ON lights
- Features a single 40 amp relay/circuit breaker with 5 - 20 amp fused switch outputs
- Durable ABS plastic housing with backlit labels
- Interchangeable legend labels for switch identification: Rotating, Flashing, Aux. 1, Take Down, Left Alley, Right Alley, Strobe, Compartment. Lts., Work Lts., Grille & Deck Lts., Rear Lts. & Front Lt. Cut-Off
- Includes Switch box w/ Universal Bracket, mounting hardware, switch labels & 18" pigtail w/ insulated quick connects for termination

6.2" (16 cm) W x 2.2" (56 mm) H x 5.2" (13 cm) D



# IntelliSwitch993

**Digital Switch  
w/ Power Pursuit Buttons:  
#ETSP993**

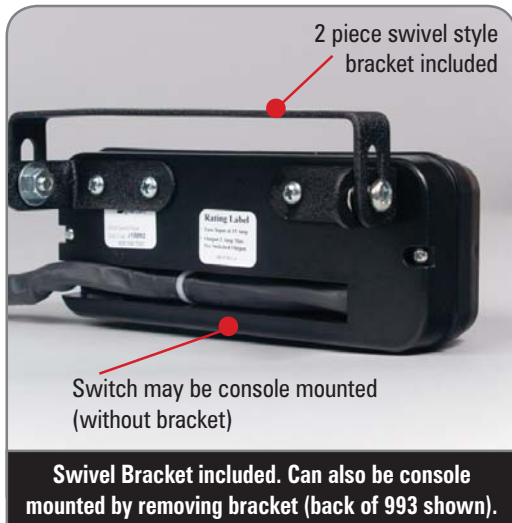
2 Hidden Membrane Switches  
behind the logo

3 Power Pursuit Buttons can control any  
combination of the switches below



# IntelliSwitch990

**60 Amp Digital Switch:  
#ETSP990**



- **INTELLSwitch models offer high speed action, low current draw & increased reliability with efficient digital technology.** Both models feature Ryno-Tuf push buttons, 60 title legend sheets & optional bracket with mounting hardware. Switches can be console mounted if desired

- **Compact, slim design with self performing diagnostics** at power-up to ensure optimum performance.

- **Both switches feature LED backlighting**

- **INTELLSwitch993 model offers 11 programmable buttons:** 9 total Ryno-Tuf push buttons (3 Power Pursuit buttons) with 2 hidden "discreet" membrane buttons located behind the SoundOff logo. You can configure the Power Pursuit buttons to operate any combination of the 6 remaining push buttons automatically, eliminating hours of tedious wiring. The 2 hidden membrane switches can be programmed for discreet functions of your choice such as timed gun lock

- **INTELLSwitch990 model offers 6 Ryno-Tuf durable push buttons** that are fully programmable with 60 amps maximum output. One push button can be set as an 8 second timed momentary if needed



Tech Specs	INTELLSwitch™ 990 & 993
<b>Mounting:</b>	2-pc. swivel style bracket included or can be console mounted
<b>Input Voltage:</b>	12 Vdc
<b>Current Draw:</b>	#ETSP990 - 60 amps max #ETSP993 - 12 amps max
<b>Dimensions:</b>	Length x Height x Depth 6.5" (165 mm) L x 2.5" (64 mm) H x 2" (51 mm) D